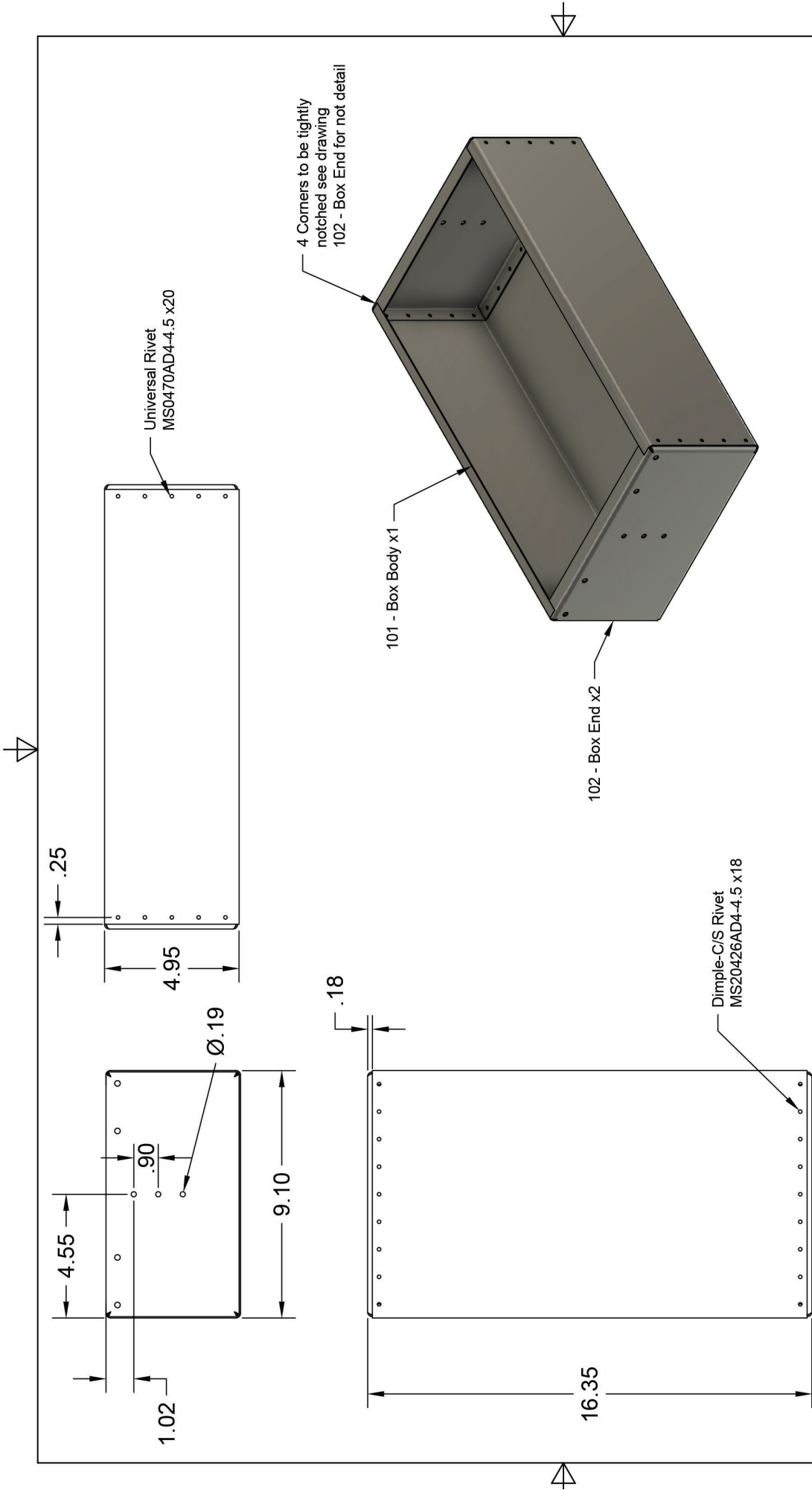



	Project Name: Precision Toolbox	
	Camosun Sheet Metal Department	
Tolerances in inch	Drawn By: James Miller	
X.X ± 0.06 X.XX ± 0.03 X.XXX ± 0.015	Date: 2022-03-01	Drawing # 001-Full Assembly
Scale: NTS	Checked By:	Material:
Notes: <ul style="list-style-type: none"> • 1/2" ridged conduit for handle • 1/8" barrel X 3/4" Piano Hinge for upper tray lids • All hard-ware for tray hinge and handle to be stainless steel • Sheet metal components to be made from 5052 H3 aluminum • Solid aircraft rivets to be used for joining all sheet metal parts 		Rev 1



	Project Name: Precision Toolbox	
	Camosun Sheet Metal Department	
Tolerances in inch X.X ± 0.06 X.XX ± 0.03 X.XXX ± 0.015	Drawn By: James Miller	Drawing # 002 - Body Assembly
Scale: NTS	Date: 2022-03-01	Checked By:
	Material: .050" 5052 H3 Aluminum	Rev 1

- Notes:**
- Deburr all holes before riveting
 - No sharp edges or burrs